

3DX-RAY



ThreatScan®-LS1

- Suspect item inspection
- EOD evaluation
- Customs control
- Vehicle scanning
- Large format panel

Portable, real-time x-ray scanning system

ThreatScan®-LS1 is a lightweight, portable, battery powered x-ray scanning system designed in co-operation with first responders and EOD teams to meet the needs of the field operative.

Quick and simple to deploy, the system produces high quality real-time x-ray images for rapid and accurate decision making.

The slim detector panel is positioned behind the target; the generator is placed in front.

The scan is activated from the laptop imaging station.

The large 600mm x 460mm imaging area of the ThreatScan®-LS1 enables the operator to scan typical bags and packages in a single scan.

Penetrating up to 34mm steel at 120kV the LS1 produces sub-millimetre resolution images.

A range of sophisticated image processing functions, including materials

discrimination, pan, zoom, DeepFocus™, 3D Emboss, measurement and annotation, coupled with high quality images enable the operator to interpret the image quickly and accurately.

The software can also communicate the image on screen to a remote command centre and save images in JPEG and other common file formats.

Ideal for use by First Responders, EOD teams, Counter Surveillance, and Customs and Security Operatives

The system comprises

- A large resilient detector panel
- A portable and robust x-ray generator
- A laptop imaging station
- Batteries and chargers
- Wireless communication
- Carry cases
- ThreatSpect software

Features

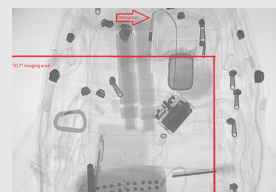
- High penetration with sub-millimetre resolution
- Large area, thin detector panel
- Real-time images
- Designed for rapid deployment and ease of use
- Powerful image enhancement and analysis tools
- Intuitive, user-friendly ThreatSpect software
- Scans to 3mm above floor level



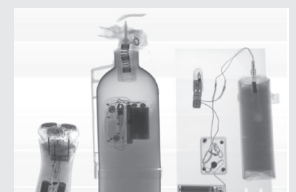
Sub range enhancement function



X-ray of drugs in pipes in fuel tank

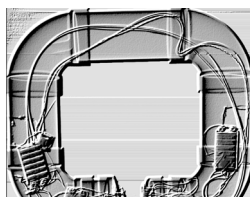


Comparison with 14"x17" detector



Set of IED devices

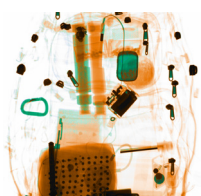
ThreatScan®-LS1



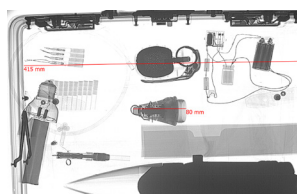
3D Emboss



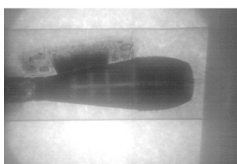
Invert



Materials discrimination



Measurement



Superb penetration - 25cm concrete

Standard Package

Large format x-ray detector panel, 120kV x-ray generator, laptop computer, ThreatSpect software, batteries, chargers, wireless communication and transport cases.

Options include: tripod, repeater stations, spare batteries and chargers, soft carry cases, wired and fibre optic cable sets.

X-Ray Detector Panel

Image / detector resolution	1152 pixels, 40AWG 3.4 lp/mm
Dynamic range	65536 (16-bit)
Image acquisition / scan speed	5 sec
Detector dimensions	753mm x 478mm x 25mm (external) (L x H x D)
Imaging / scanning area	600mm x 460mm / scans to 3mm above floor level
Weight	5kg
Power	Self contained rechargeable lithium ion battery
Communication protocols	Wireless 802.11 a/b/g/n Wired or fibre optic options, TCP/IP ethernet
Operating temperature	-10°C to +40°C / MIL-STD-810F 501.4 and 502.4
Humidity	0% to 95% non-condensing
Ingress protection (water, dust)	IP55

X-Ray Generator

Type	1mA constant potential 120kV
Power	Self contained rechargeable cells Up to 180 images on one charge (2 hour charge) Mains power option
Penetration	30mm guaranteed, 34mm typical
Weight (without battery)	5.5 kg
Size (L x W x H)	245mm x 180mm x 80mm

Communications

Wireless (as standard)	802.11g / up to 120m range (extendable with repeaters)
Fibre optic (option)	100m, 150m, 200m
Ethernet (option)	25m, 50m

Imaging Station*

Type	Laptop computer (ruggedised / tablet options available) <i>* PC specification to be confirmed and agreed at order stage</i>
Processor	Intel Core i5-4200U, Dual Core
Display	15.6" Full High Definition (1366x768) LED Display with AntiGlare
Memory	4GB 1600MHz DDR3L (RAM)
Hard Drive	500GB Serial ATA Hard Drive
Optical Drive	DVD +/-RW Media Bay Drive
Operating System	English MS Windows
Power	Mains and battery

Software Features

Adjustable x-ray source parameters (kV, mA & time)
Standard, Inverted and False Colour images
Rotate, Histogram, Pan, Zoom, DeepFocus™
On-screen Measurement and Annotation (options)
Materials Discrimination and 3D Emboss (options)
Multi-file format import (option)
Multi-touch functionality for tablet based operation (option)

Safety

Physical safety interlock plus key switch
Audible & visible warning signs
CE compliant

www.3dx-ray.com

T. +44 (0) 1509 817400 F. +44 (0) 1509 817401 E. sales@3dx-ray.com

3DX-RAY Ltd, 16 & 18 Hayhill Industrial Estate,
Barrow upon Soar, Leicestershire, LE12 8LD, UK

An **IMAGE SCAN** company

Registered address: 16 & 18, Hayhill Industrial Estate,
Barrow upon Soar, Leicestershire, LE12 8LD, UK.
Registered in England No. 3237543.

